

## Miami Beach Townhouse



This beautiful holiday townhouse is located on the southernmost tip of Miami Beach. Nearly 4000 square feet are divided among four floors, pool patio, and a roof deck. The house marries relaxing Miami Beach style with New York chic — the city of the client's primary residence. Magdalena Keck Interior Design designed the house with nature-inspired comfort and effortless luxury in mind. She used very few materials, selecting them with great care for their color, texture, and feel in the warm weather. She consistently used coral stone, silk, linen, and wood. Off the living room is a comfortable patio with a plunge pool. The soft white lounge pieces and a huge Royal Botania umbrella complement the teak and stainless steel dining table and chairs. The accessories at the pool patio add a finished look and provide comfort. *Courtesy of Jeff Cate*

The walls throughout the entire house are painted in a warm white Farrow and Ball color called Pointing, which also unifies all living spaces. The focal point of the living room is the "Close" rug by Christopher Farr in soothing tones of pale light blue, cream, and nude. Oversized, four feet deep Flexform sofas are upholstered in a neutral beige / blue linen. A David Weeks four-tier chandelier is comfortably hanging in the double space, its color perfectly matching the walls. *Courtesy of Jeff Cate*



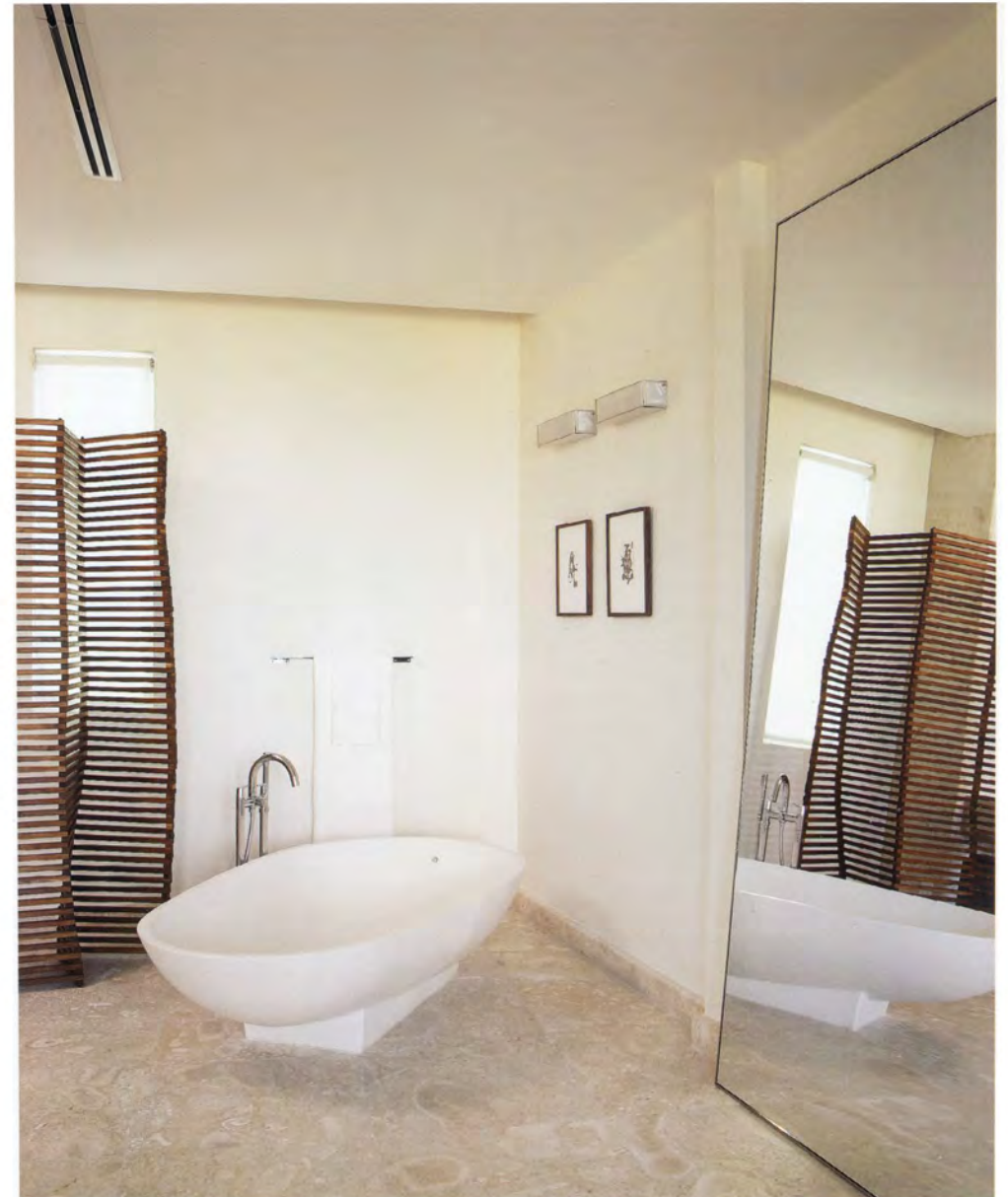


The coral stone, which is used for all floors, provides cool surfaces and unifies the open kitchen and its espresso stained wood storage with the living area. The island top extends, creating a breakfast surface. The adjustable bar stools in polished chrome are upholstered in dark brown linen. *Courtesy of Jeff Cate*

The light tones of the house contrast with the espresso stained wood throughout. Floating shelves with wood backdrop in the same finish provide ample space for books and art objects. *Courtesy of Jeff Cate*



The upper level of the residence houses the minimalist master bedroom with the grand Nakashima bed and an open bath area. A soft hand tufted silk rug complements the cool coral stone floor. A sculpted wooden Boffi fan hangs above the bed. The David Weeks sconces correspond with the living room chandelier.  
*Courtesy of Jeff Cate*



The open bath area with organically shaped free standing tub and a huge mirror add to the luxury of the master bedroom.  
*Courtesy of Jeff Cate*



The top floor offers the best views of the Atlantic Ocean. It has a small kitchen, a bathroom, a roof deck with a bar and lounge bed, as well as an outdoor television. *Courtesy of Jeff Cate*

## Upper East Side



This 3,500 square foot residence is located in upper East Side Manhattan, close to East River. The view from 34<sup>th</sup> floor terrace and the floor-to ceiling-windows stretches north and east over the river and its bridges far to Queens and Brooklyn. The tone of the residence is inspired by the surrounding city, air, and water below. Warm silver and foggy grays as well as deep browns in many textures dominate Magdalena Keck's palette. The living room features a large sectional sofa in gray linen and a round dark wood coffee table. The floor is finished with large- scale honed Richmond Gray limestone and softened by a wool rug by Christopher Farr. Works on paper are by Amanda Guest. *Courtesy of Jeff Cate*

The living room features ebony wall panels and espresso lacquer media cabinet. The glass bar literally and metaphorically reflects large glass windows and the city and river beyond. *Courtesy of Jeff Cate*





Magdalena selected warmer tones for the kitchen. Stainless steel appliances and thick stainless steel counter top complement cabinets in espresso lacquer. The Richmond gray limestone floor stretches throughout all the public spaces of the entire apartment including the kitchen. *Courtesy of Jeff Cate*

The designer's goal was to visually enlarge the powder room space. Vertical cove lighting was created. The main wall features a full height mirror and mini brick matte nickel tiles. *Courtesy of Jeff Cate*

The master bathroom features a wall-mounted vanity with vessel sinks. Above the vanity a full height mirror reflects a custom mosaic with image of tree branches. The mosaic wraps around the bathtub enclosure and continues up the wall into the light cove. *Courtesy of Jeff Cate*



The master bedroom's walls are painted very dark brown, almost charcoal color. The lacquer credenza is in the same color. Fully upholstered wall acts as a headboard. Silk carpet completes the room. Floor-to-ceiling windows on north side offer exquisite views of the city and Central Park. *Courtesy of Jeff Cate*



Magdalena injected purple and magenta tones in the children's room to complement the silver grays present throughout the apartment. The main feature is a custom "cat" wallpaper with deep purple background. The white and polished aluminum simple desk almost disappears in front of the window. The Eames aluminum group desk chair is upholstered with magenta hopsack fabric. There are also two sculptural elements: purple beanbag and a long fringe pendent lamp that drops almost to the floor. *Courtesy of Jeff Cate*



The guest bedroom is done in tones of foggy gray and dark deep brown. Geometric shapes of the custom night table and the floor lamp are contrasted with the softness of black and white photography. *Courtesy of Jeff Cate*